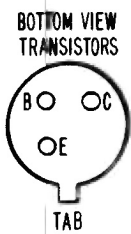
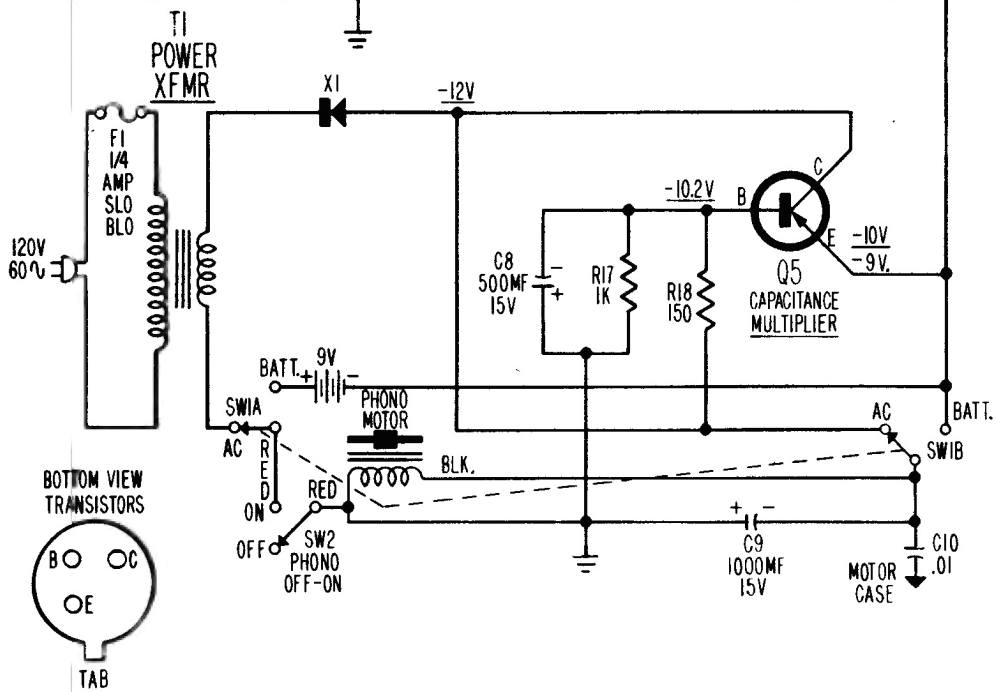
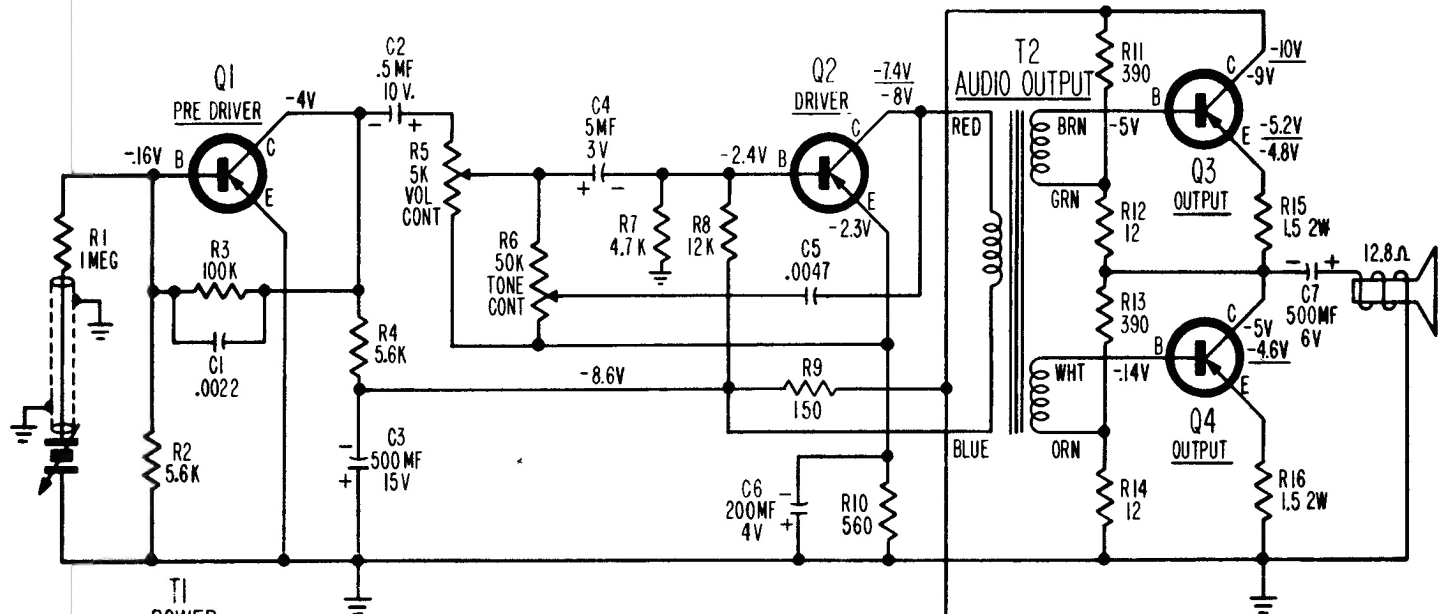


# Westinghouse

MODELS H-99AC1 H-99AC2

charcoal gray olive green



TRANSISTOR CHART			
FUNCTION	TYPE	PART NO.	ALT. TYPE
CAPAC. MULT.	2N1038	297V057H02	Q5
OUTPUT *	2N1038	297V057H01	Q4
OUTPUT *	2N1038	297V057H01	Q3
DRIVER	GC639	297V040H16	Q2
PRE DRIVER	GC639	297V040H16	Q1
*MATCHED PAIR			

NOTE:

- ALL CAPACITOR VALUES IN MFD, & ALL RESISTORS IN OHMS 1/2 WATT RATING UNLESS OTHERWISE SPECIFIED.
- A TOLERANCE OF ±20% IS ACCEPTABLE FOR VOLTAGES TAKEN WITH V.T.V.M. FROM POINTS INDICATED TO \* WITH LINE VOLTAGE AT 120 V.A.C. KNOWN FRESH BATTERIES MUST BE USED IN BATTERY POSITION.
- UNDERLINED VOLTAGES TAKEN IN AC POSITION. ALL OTHER VOLTAGES APPLY TO BOTH BATTERY AND AC POSITIONS.

### CHASSIS REMOVAL

1. Remove the two knobs.
2. Remove the 4 screws that secure the grille.
3. Pull out the grille. The chassis is attached to the grille and comes out with it.

CHASSIS V-2526-1